



GRAND  
CONCOURSE  
AUTHORITY

ANNUAL REPORT

2024

Cover Photo: Powers Pond, Mount Pearl

# Table of Contents.

- Introduction ..... 1
  - About Our Organization.....1
  - Mission Statement .....1
  - GCA Board of Directors - Current.....2
  - Message from the Chair.....3
  - 2024 Highlights.....4
  - List of 2024 Projects .....6
- Planning, Design, and Construction Projects..... 8
  - Manuels River Community Inc.....8
  - Bowring Park Foundation .....9
  - Town of Conception Bay South ..... 10
  - Town of Torbay..... 11
  - Town of Paradise ..... 13
  - City of St. John’s..... 15
  - Town of Logy Bay Middle Cove Outer Cove.....17
  - City of Mount Pearl..... 18
  - Town of Portugal Cove St. Philips ..... 20
  - Pippy Park Commission..... 21
  - Other Planning, Design, and Construction Projects ..... 22
- Maintenance .....23
- Storm Renewal and Vandalism Repairs.....24
- Winter Trail Grooming .....25
- Financial Summary Comparison (2 Years).....26
  - Summary of Revenue for 2023 (Unaudited)..... 26
  - Summary of Revenue for 2024 (Unaudited)..... 26
- 2025 Proposed Projects and Funding.....27

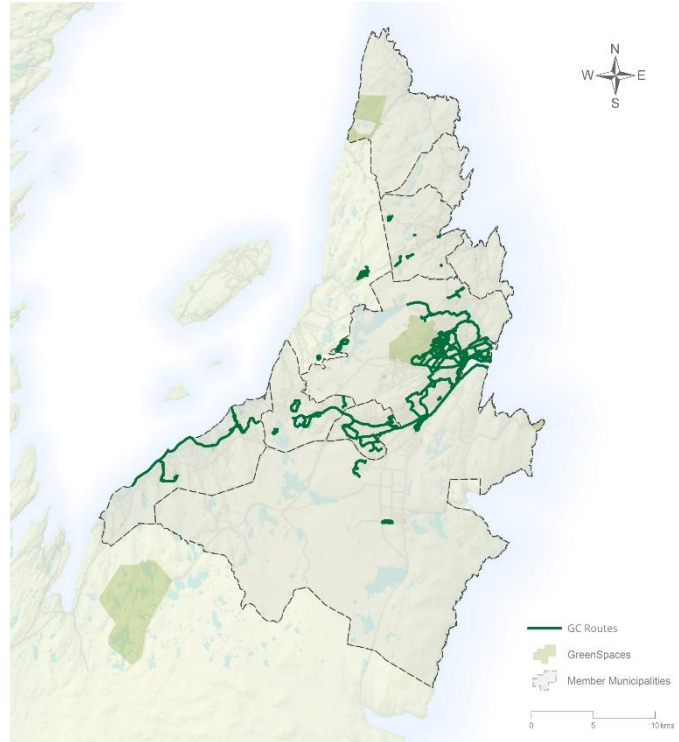
## Introduction

### About Our Organization

The Grand Concourse Authority (GCA) is a member-based, non-profit organization, established under the Grand Concourse Act (1994). We are dedicated to the development and maintenance of an extensive network of walkways, greenspaces, and amenities throughout the Northeast Avalon Peninsula. Since our inception in 1993, the GCA has successfully completed almost 800 community-development projects and over 200 km of connected and independent walkways.

Our members are a diverse group made up of neighbouring municipalities, institutions, and not-for-profit organizations with the common goal of improving the health and wellness of our communities through the development of these public access walks and open spaces.

None of the projects outlined in the following report would have been possible without the invaluable contributions and support of our members. We are grateful for their guidance and funding, to make this collaborative organization a continued success.



### Mission Statement

The Grand Concourse Authority is dedicated to the continued development and expansion of our award-winning walkway network. We are also committed to the enhancement and protection of this network through regular maintenance and upgrading, environmental initiatives, open space and park development, promotion, and public education. We are seeking to improve the quality of life of residents in our region by encouraging an active and healthy lifestyle within the natural environment. We want every community to experience the benefits that a high-quality walkway system can bring to residents, communities, and visitors. Therefore, we are committed to sharing our knowledge and experience across the province through consulting services and published materials.



## GCA Board of Directors - Current

The Board of Directors is made up of representatives appointed by the members of the Authority.

- Mr. Ron Penney (*Chair*) - Railway Coastal Museum Foundation



RAILWAY-COASTAL MUSEUM

- Ms. Jessica Foley (*Vice Chair*) - City of St. John's

- Mr. Brian Winter (*Secretary*) - Town of Torbay

- Ms. Jody Murray (*Treasurer*) - Town of Portugal Cove-St. Philip's



BOWRING  
PARK  
FOUNDATION

- Mr. Steve French - Bowring Park Foundation

- Mr. Keith O'Driscoll - C.A. Pippy Park Commission



- Ms. Tina Auchinleck-Ryan - Town of Paradise

- Mr. Grant Vivian - Memorial University

ST. JOHN'S

- Mr. Brandon Russell - St. John's Port Authority



- Mr. Glen Dollimount - City of Mount Pearl

- Mr. Nick Miller - Town of Conception Bay South



- Mr. Denis Hickey - Town of Logy Bay-Middle Cove-Outer Cove

- Mr. Alex Collins - Autism Society of Newfoundland and Labrador

- Mr. Kyle Hawco - Town of Holyrood



- Manuels River Community Inc. (Vacant)

- Town of Flatrock (Vacant)



- Town of Pouch Cove (Vacant)



## Message from the Chair

2024 has been another successful year for the Grand Concourse as we continue to expand on Paul Johnson's vision for an integrated trail network in the Northeast Avalon. Of particular note is the completion of the shared use trail from St. John's to Holyrood.

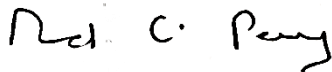


“As a cyclist I look forward to a more comfortable ride from the ones I used to take many years ago navigating the crushed stone on the old rail bed!”

“I'm a frequent user of the Grand Concourse in the east end of St. John's and it's wonderful to see the high usage which the trail system gets.”

Walking is one of the best and most accessible exercises there is, and we are very proud of what we have created in the region over a very short period of time to allow residents to walk in safety in the beautiful settings which nature has blessed us with.

We look forward to the continued expansion of the trail system supported by our members and constructed to the highest standards by our wonderful staff.



Ron Penney  
Chair



## 2024 Highlights

Year after year we have seen a shift in focus and priority among our members. While GCA projects may decline with some of our members, they tend to trend upward with others at the same time. What has remained constant is the commitment of all our members to foster this worthwhile collaboration and to providing our communities with quality, accessible opportunities for healthy active living.

2024 brought further change with new faces to our board of directors, and new relationships between management and staff of the authority, and that of some of our members. It also brought continued growth with expanded resources and services offered, in addition to the many projects completed throughout the year.

Some of these projects undertaken for our members included the development and completion of new trails as well as upgrades to existing trails, in the towns of Conception Bay South, Paradise, and Torbay. Aging boardwalks at both Powers Pond and Branscombes Pond in the City of Mount Pearl were also replaced with new granular walks.



*T'Railway, CBS*



*Branscombes Pond, Mount Pearl*

Some of our members continued to utilize our planning and design services with new trail and park designs developed for the Towns of Paradise and Portugal Cove St. Philips, and the City of Mount Pearl. A new storyboard was designed for the Logy Bay Middle Cove Outer Cove veteran's memorial, new directional signage for the Towns of CBS and Torbay, and graphic updates completed for the Bowring Park visitor's brochure.

The GCA continued to proudly assist its members and associated groups, as well as individual donors, to remember lost loved ones or to commemorate people and events in history through gestures like dedicated benches, engraved stones, and interpretive panels.

We continued to fabricate our popular memorial benches and engraved pavers in house, as well as creating new granite monuments and plaques for a variety of projects.



*In Memoriam Bench*



*Bannerman Park Memory Stones*



In 2024, our maintenance program grew once again with the addition of new trails, amenities, and seasonal beautification sites. It continued to be a large part of our operations, responsible for the care and maintenance of many trails and sites in the region. With assistance from the Trans Canada Trail Youth Employment Program once again, our workforce was augmented to help keep up with the growth. Maintenance crews cover all sites weekly throughout spring, summer, and fall performing regular maintenance tasks and periodically tend to damage from major storms and vandalism as well as seasonal planting.



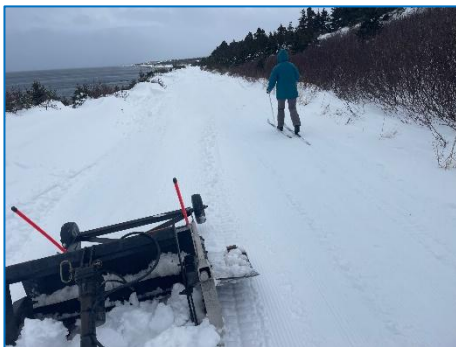
*Spring Bulbs, Portugal Cove St. Philips*



*T'Railway Repairs, CBS*



*Hard at Work*



*T'Railway Grooming, CBS*

We continued winter trail grooming in CBS and Pippy Park and expanded services for the 2024-2025 season to include Voisey's Brook Park in Portugal Cove – St. Philips. Users can take advantage of the trails through the winter months for walking, skiing, and snowshoeing.

As we look back, we should all feel a sense of great accomplishment and take pride in the lasting mark we've left on this great province not only over the past year, but since the birth of the Grand Concourse. Thanks to the continued support of our members and the hard work and dedication of our management and staff, the authority once again enjoyed a busy and prosperous year in 2024. All of us here at the Grand Concourse Authority look forward to the coming season and the promise of continued growth and prosperity and to serving our members with high standards synonymous with the GCA.

## List of 2024 Projects

### Planning, Design, and Construction Projects

#### Town of Conception Bay South

Community Park Storyboards  
Topsail Heritage Storyboard  
CBS T’Railway Upgrades Phase IV  
(Doyles Rd. to Indian Pond)  
Community Garden cleanup.  
T’Railway Rock Removal/Ditching

#### City of Mount Pearl

Urban Forestry Plan Phase III  
Team Gushue Sports Complex  
    Flag Poles Installation  
    Statue Installation  
Powers Pond Boardwalk Replacement  
Branscombes Pond Boardwalk Replacement  
Donovan’s Walkability Trail Design  
Commemorative Benches (3)

#### Logy Bay, Middle Cove, Outer Cove

LBMCOOC Veterans Memorial  
    Flagstone Repairs  
    Bench Installation  
    Engraved Military Badges  
    Storyboard

#### Town of Paradise

Top Pond Park Trail Connection  
Trenton Drive Trail  
Silver Birch Trail Design

#### Manuels River Community Inc.

Commemorative Plaques  
Wayfinding Signage  
Root Cellar Improvements

#### City of St. John’s

Kitty Gaul Brook Bank Stabilization  
Boardwalk/Bridge Board Replacement  
Bannerman Park Statue Base  
Bowring Park Bridge Upgrades  
City Benches Concrete Pads  
St. Pat’s Ballfield Upgrades  
Quidi Vidi Lake Lookouts

#### Portugal Cove – St. Philip’s

Broadcove River Trail Design  
Voisey’s Brook Park Solar Lighting  
Classroom Seating Installation  
Splash Pad Sign  
Emma Churchill Memorial Park Flowerbed  
Oceans Edge Landscape Design  
Town Beautification Designs  
Wheelchair Accessible Picnic Tables

#### C.A. Pippy Park

Kent’s Pond Wharf Removal  
Golf Course Shelving Installation  
Welding Repairs to Trailer

#### Town of Torbay

Upper Three Corner Pond Park (UTCPP)  
    Trail Construction  
    Playground & Landscaping  
    Junior Softball Field Netting  
    Junior Softball Field Trail  
    Trail Markers Design and Installation  
Pineridge Crescent Playground Landscaping  
Rattling Brook to Bypass Trail  
Torbay Depot Sign Landscaping  
History House Museum Landscaping

#### Bowring Park

Brochure Graphic Updates



**Autism Society of Newfoundland and Labrador**

Patio Repairs  
Asphalt Walk  
Armour Stone Placement

**Other Planning, Design, and Construction Projects**

Bannerman Park Memory Stones.  
GCA Benches.  
GCA Website and social media.  
S.W. Moores Memorial Park dedication Stones.  
(Harbour Grace)  
In Memoriam Benches.  
Trans Canada Trail Spring Cleanup.  
Storyboard – Heritage Interpretive Services  
Regiment Canon Carriage Refurbishment  
St. Edwards School Classroom Benches

**Maintenance Projects**

**C.A. Pippy Park.**

Walkway Maintenance.  
Winter Trail Grooming.  
Storm Renewal/Vandalism Maintenance.

**City of St. John's**

Walkway Maintenance.  
Railway Coastal Museum Maintenance.

**Janeway Play Garden.**

Landscape Maintenance.

**Memorial University Trails (Long Pond).**

Walkway Maintenance.  
Storm Renewal/Vandalism Maintenance.

**St. John's Port Authority.**

Landscape Maintenance.

**Town of Conception Bay South.**

Walkway Maintenance.  
Winter Trail Grooming.  
Storm Renewal/Vandalism Maintenance.

**Town of Torbay.**

Beautification.  
Walkway Maintenance.

**Manuels River Community Inc.**

Trail Maintenance.

**Autism Society.**

Landscape Maintenance.

**Town of Portugal Cove-St. Philip's.**

Beautification.



## Planning, Design, and Construction Projects

### Manuels River Community Inc



#### Manuels River Trail Map Signs – Planning, Design, and Construction.

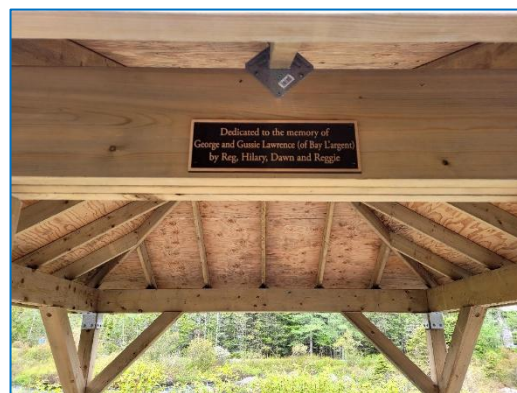


Worsley Park, Conception Bay South

Ongoing upgrades to the Manuels River Trail continued in 2024 with the addition of new trail map signage at Worsley Park and the newly upgraded Canyon East Trail. These trail signs are constructed from granite in recognition of the area’s geological significance. Existing map signs were also replaced with updated maps, reflecting recent changes to the trail system.

#### Manuels River Trail Gazebo Plaque – Planning, Design, and Construction.

In 2022 the GCA constructed a new gazebo to replace the old along Canyon Trail East. In 2024, the gazebo was dedicated in memory of George and Gussie Lawrence with a bronze plaque placed over the entrance.



Lawrence Memorial Gazebo, Manuels River, CBS

#### Manuels River Root Cellar Improvements – Planning, Design, and Construction.

Constructed by the GCA in 2023, the root cellar required some additional work in 2024 to improve ventilation. Exhaust fans and electronic controls were added to increase air flow and mitigate excessive moisture buildup.





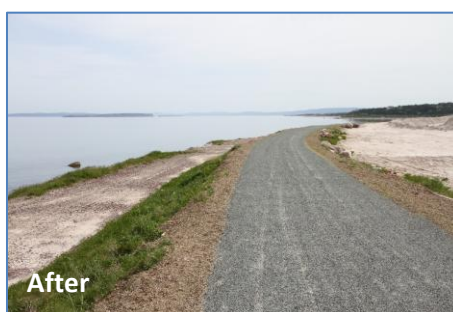
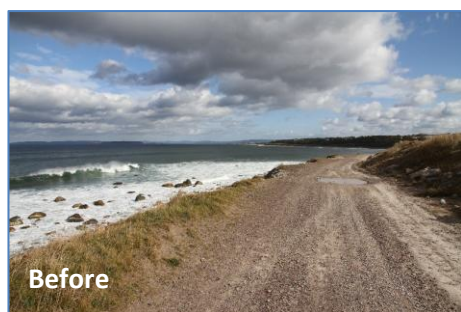
## Town of Conception Bay South



the town of  
**Conception  
Bay South**  
*Bright town. Bright future.*

### CBS T’Railway Phase IV Completion - Construction.

Upgrades to the T’Railway through the town continued in 2024 with the completion of the section from Doyles Road in Upper Gullies to Indian Pond in Seal Cove. Sections of the trail were diverted away from the eroding shoreline and stabilized with armour stone where necessary. The trail surface was leveled with new ballast material and refinished to GCA standards. This completes all upgrades of the T’Railway from St. John’s harbour to Hollyrood.



Indian Pond, CBS

### Community Park Storyboards – Construction.

The GCA assisted the town with ongoing development of the CBS Community Park with the installation of a storyboard depicting the heritage of the area and Rideout’s Farm. Crews also installed a dedication board for the playground in memory of Alex and Riley Mercer, siblings who both tragically succumbed to cancer.



CBS Heritage, Rideout’s Farm



S.O.A.R Playland, CBS Community Park

### Community Garden Cleanup – Construction and Maintenance.

Crews performed a cleanup at the community gardens at Gateway, removing weeds and debris and mowing the grass.

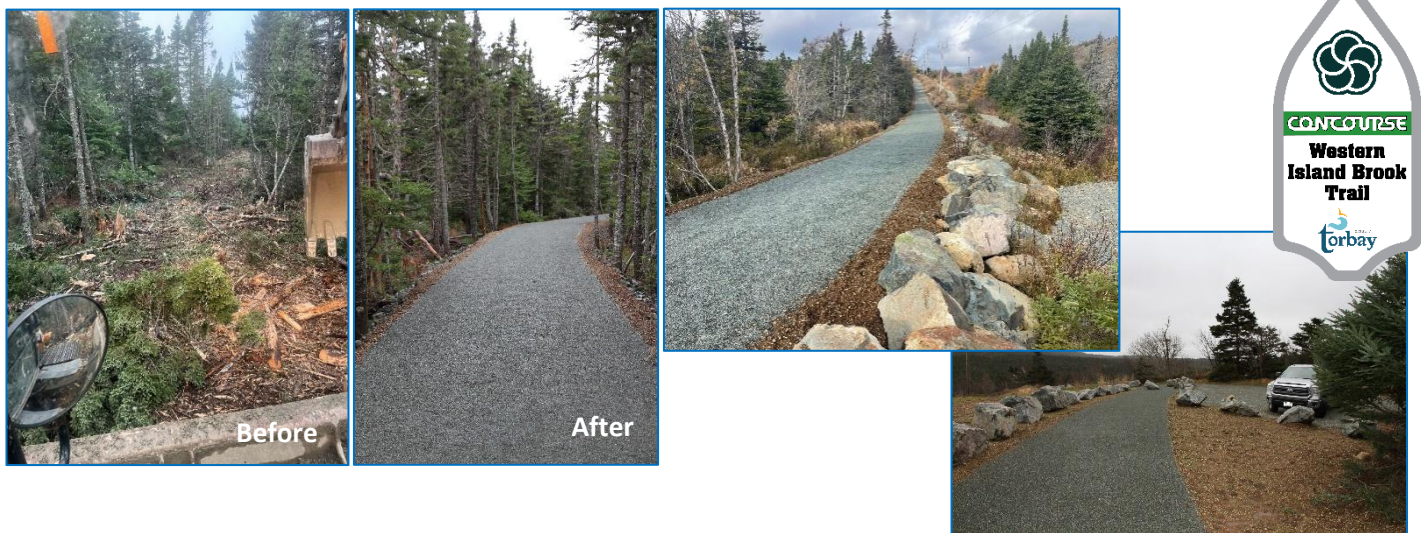


Town of Torbay



Western Island Brook Trail – Planning, Design, & Construction.

Construction began on the section of trail from Rattling Brook Road to the Torbay Bypass Road in 2021. The final connections were made and the trail completed in 2024 along with safety signage and GCA trail markers, as well as a small gravel parking area off Indian Meal Line. A parallel section of ATV trail was also constructed to separate ATV and pedestrian traffic.



Upper Three Corner Pond Park (UTCPP) Trail – Planning, Design, and Construction.

As part of ongoing improvements to the park, GCA began planning and construction in 2023 on a new woodland walking trail linking existing trails and recreation amenities within the park. Work continued in 2024 with 1016 meters of trail completed including trail markers.



**Upper Three Corner Pond Park Improvements– Planning, Design, and Construction.**

In addition to the new woodland trail, other improvements within the park were completed in 2024. New playground equipment was installed with GCA crews completing the safety surfacing and surrounding landscaping. A new access trail and field netting were installed for the junior softball field, and turf maintenance was performed on the senior softball field.



*Trail to Junior Softball Field, UTCPP, Torbay*



*New Playground, UTCPP, Torbay*

**Pineridge Crescent Playground and Landscaping – Planning, Design, and Construction.**

In addition to the UTCPP playground, Pine Ridge Crescent playground received upgrades with a new play structure to replace the old and a new set of swings. GCA crews completed the prep work prior to installation of the equipment along with the safety surfacing and surrounding landscaping.



*New Playground Equipment, Pineridge Playground, Torbay*



Town of Paradise



Top Pond Park Trail Connection – Planning, Design, and Construction.

At the request of the town in 2023, the GCA surveyed the site and developed a plan for an accessible trail connection from Stephanie Avenue to the previously developed granular trail beside Top Pond. In 2024, crews completed the 60-meter trail connection through the right-of-way.



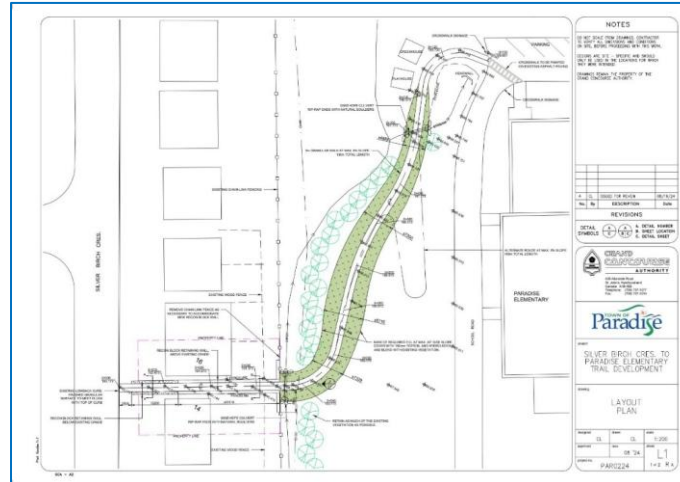
Trenton Drive Trail – Planning, Design, and Construction.

Following designs completed in 2023, GCA crews began construction on an accessible trail in 2024 from Trenton Drive to Octagon Pond Elementary School. The 247-meter serpentine trail covers a vertical distance of 11.92 meters, providing safe and comfortable access between the growing subdivision and the elementary school. Landscaping work is expected to be completed in 2025.

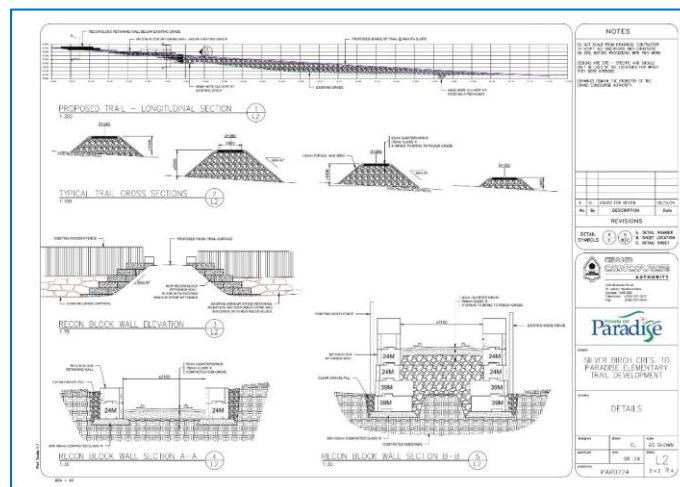


**Silver Birch Crescent Trail – Planning, Design, and Construction.**

In 2024 on behalf of the town, plans were completed for an accessible trail through a right-of-way between Silver Birch Crescent and Paradise Elementary School. The plan requires much of the trail to be elevated with retaining walls to maintain acceptable grades for accessibility. Construction of the trail is anticipated to begin in 2025.



Silver Birch Trail, Layout Plan



Silver Birch Trail, Sections and Details



**City of St. John's**

**ST. JOHN'S**

**Bannerman Park Memorial Stone – Planning, Design, and Construction.**

The GCA continued in 2024 to assist the city and the Bannerman Park Foundation with the fabrication and installation of granite memorial stones. These pavers can be dedicated to individuals or groups and engraved with names and personalized messages for placement in the Memory Garden.



*Engraving a large stone slab.*



*Completed memorial pavers.*



*Installing memorial pavers.*

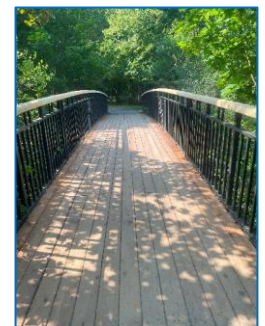
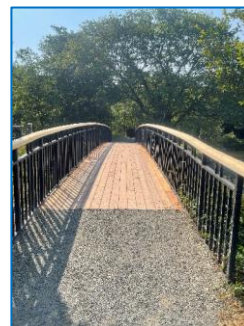
**Kitty Gaul Brook Bank Stabilization – Planning and Design.**

Erosion of the banks of a section of Kitty Gaul Brook in the neighbourhood of Cowan Heights is threatening the adjacent open space and private properties. In 2024 the GCA installed armour stone retention along a section adjacent to Canada Drive to mitigate the effects of the stream erosion.



**Bowring Park Bridge Upgrades and Railing Replacement – Construction.**

At the request of the city, GCA crews completed upgrades to the pedestrian bridges at the duck pond replacing the wooden hand railings and decking boards.



**Quidi Vidi Lake Lookout Replacement – Construction.**

At Quidi Vidi Lake, GCA crews removed two old worn wooden decks and constructed two new lookouts in their place.



**St. Pat’s Ballfield Upgrades – Planning, Design, and Construction.**

In preparation for the upcoming Canada Summer Games, the GCA was asked to perform some upgrades within the baseball complex. Crushed red stone was placed along the perimeter of the practice field to clean up the area and make it more appealing, and new recon block seating was installed near the outfield to serve as additional viewer seating. Additional work is to be completed in 2025.



*Red Stone Border*



*Recon Block Seating*



*Viewer Seating*

**Other Projects completed for the COSJ – Construction.**

The GCA continued to supply the city with our own park benches, including a new wheelchair bench, and installed concrete pads for these benches throughout areas of the city. Crews also installed the concrete base for a new statue to be placed in Bannerman Park in 2025. In addition, GCA crews performed a variety of repairs to bridges, decks, and boardwalks, including replacing broken and worn components.



*Statue Base*



*Wheelchair Accessible Bench*



## Town of Logy Bay Middle Cove Outer Cove



## Logy Bay Middle Cove Outer Cove

### Veterans Memorial Park Engraved Badges – Planning, Design, and Construction.

On behalf of the Logy Bay Middle Cove Outer Cove Development Association and the town, the GCA designed, fabricated, and installed 18 granite pavers. These pavers are emblazoned with the badges of the different branches of military in which residents of the town served in various conflicts of the past. Newfoundland, Canadian, British, and American regiments are all represented.



Band of Engraved Pavers



Military Badges



Band of Pavers

### Veterans Memorial Park Storyboard – Planning, Design, and Construction.

In 2024 our designer also completed graphic work for a new storyboard outlining the development and inspiration for the Veterans Memorial Park. Photos and content for the board were provided by members of the development association and the towns museum. The board will be installed in the park in the spring of 2025.

In addition to the above work, repairs were made to the existing flagstone paving and a new GCA bench was installed on the site.

**Veterans Memorial at Ships Point, Outer Cove** / **Le Veterans Memorial à Ships Point, Outer Cove**

**Historical Significance and Construction** / **Importance historique et construction**

**A Place for Reflection and Remembrance** / **Un lieu de réflexion et de souvenir**

**Community Effort and Support** / **Effort et soutien de la communauté**

Logy Bay Middle Cove Outer Cove Development Association / Association de développement de Logy Bay Middle Cove Outer Cove

Town of Logy Bay Middle Cove / Ville de Logy Bay Middle Cove

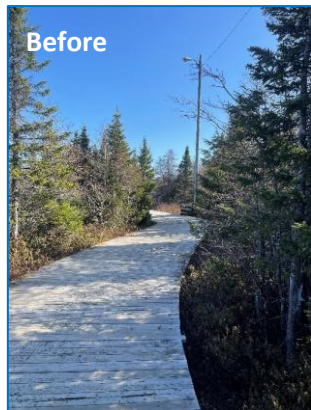


City of Mount Pearl



**Boardwalk Replacement (Branscombes Pond and Powers Pond) – Planning, Design, and Construction.**

Following the completion of plans in 2023, GCA crews began the removal of the aging boardwalks around Powers Pond and Branscombes Pond on behalf of the city of Mount Pearl, replacing them with more sustainable granular trails. A well drained ballast layer of four-inch stone was first laid along with drainage pipes where required, followed by class ‘A’ and quarter-minus surfacing.



*Powers Pond, Mount Pearl*



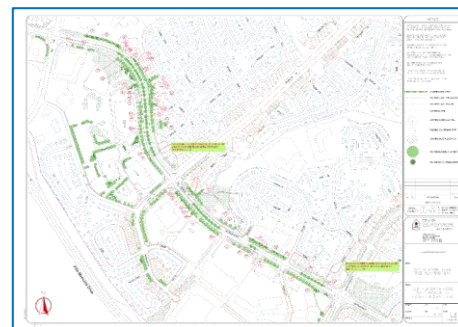
*Branscombes Pond, Mount Pearl*

**Urban Forestry Plan Phase III – Planning & Design.**

In 2021, following the completion of their Urban Forestry Study, the City of Mount Pearl approached the GCA to begin developing plans for tree planting in over twenty-one key locations throughout the city. The comprehensive plan outlining recommendations for appropriate tree species, quantities and locations was completed and adopted by the city in the fall of 2021. The tender for phases I and II were issued in 2022 and 2023. In 2024, the city prepared a funding application to complete the remaining phases over the next 5 years for which the GCA provided information and assistance.



*Overall Plan*



*Local Plan*



**Team Gushue Sports Complex Flagpole and Statue Installation – Construction.**

Continuing from previous upgrades in 2023, GCA crews installed thirteen flagpoles around the outfield of the baseball field to represent all ten provinces and three territories of Canada. At the entrance to the complex a series of bronze statues depicting children playing baseball were also installed.



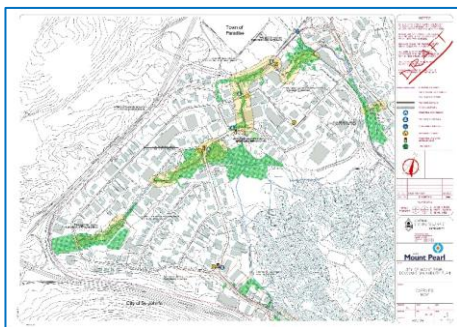
*Flagpoles, Team Gushue Sports Complex*



*Baseball Statues, Team Gushue Sports Complex, Mount Pearl*

**Donovans Industrial Park Walkability Development Plan – Planning and Design.**

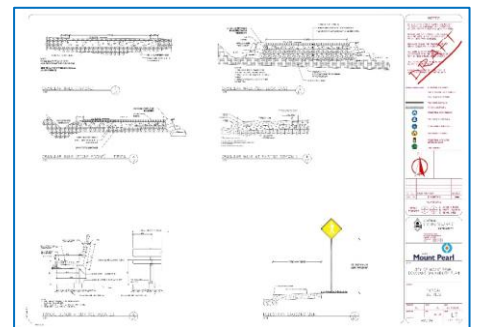
In 2024 the City of Mount Pearl approached the GCA to develop a trail plan to help improve the walkability of the Donovans Industrial Park area. The goal is to connect existing trails and sidewalks with new routes to create a walking network to better serve those who work in the area and those who visit.



*Overall Plan*



*Local Plan*



*Details*

**Town of Portugal Cove St. Philip's**

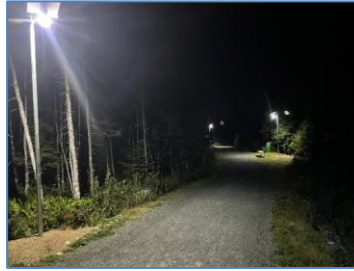


**Voisey's Brook Park Solar Lighting – Construction.**

At the request of the Town of Portugal Cove St. Philip's (PCSP), the GCA installed 36 pole mounted solar lights along sections of the trail to increase safety and to extend the usable hours past sundown.



Solar Lighting, Voisey's Brook Park, PCSP



After Dark, Voisey's Brook Park, PCSP



**Outdoor Classroom Seating – Construction.**

GCA crews also installed bench seating in the newly constructed outdoor classroom located on the Rainbow Gully Park trail system. The seats were constructed of aluminum legs with stained wooden benches.



Classroom Seating, Rainbow Gully Park, PCSP



**Wheelchair Accessible Picnic Tables – Planning, Design, and Construction.**

GCA carpenters began fabricating wheelchair accessible picnic tables for the town, modeled after the Teddy Bear tables previously introduced by the Johnson Family Foundation.



**Rainbow Gully Splashpad Signage – Planning, Design, and Construction.**

GCA assisted the town in developing a “Splash Pad Rules” sign for the newly constructed splash pad in Rainbow Gully Park. The sign was ordered at the end of the year and will be installed in spring of 2025.



## Pippy Park Commission



*Pippy Park*

### Various Jobs for the Pippy Park Commission – Construction.

At the request of the park commission, crews performed a variety of tasks in 2024. The old wharf located on the south side of Kents Pond was removed for safety reasons, shelving was installed at the Admirals Green golf clubhouse and welding repairs were performed on a trailer belonging to the commission.



*Shelving, Admirals Green Golf Club*



*Kent's Pond, Pippy Park*



## Other Planning, Design, and Construction Projects

### Villanova Junior High School Benches

School officials approached the GCA in 2024 to assist them with the installation of six precast concrete benches supplied by the school. Crews leveled the area, installed concrete bases, and secured the benches in place.



### St. Edward's School, CBS, Classroom Benches

Our crews removed concrete benches damaged by vandalism in the school's outdoor classroom and replaced them with GCA benches.



### In Memoriam (Dedicated Benches)

The GCA for many years has been helping families to commemorate the memory of lost loved ones, or a special event or achievement in one's life. We continued this memorial program in 2024 with the placement of dedicated benches in many of our member municipalities. We also fabricated granite memorial benches to be installed in 2025.



### Engraved Memorial Stones

In addition to engraved stones for the Bannerman Park Memory Garden, the GCA continues to offer engraving and installation services to all its members and associated groups. In 2024, we continued to fabricate granite pavers for the ongoing dedication of S.W. Moores Memorial Park in the Town of Harbour Grace.



### Trans Canada Trail Project Funding

As in previous years, the GCA took advantage of grant opportunities from Trans Canada Trail availing of the **TCT Spring Trail Care Grant** and the **National Trail Youth Employment Program (NTYEP)**. These programs help to fund not only the annual care and cleanup of the NL T'Railway but also to offer employment opportunities to keen and deserving youth in the trails sector.



### Canadian Society of Landscape Architects (CSLA) Legacy Project

The Grand Concourse was selected as a "Legacy Project" to be highlighted as part of the CSLA **Cultural Landscapes Collection (2024 edition)**. A collection of landscape architecture projects recognized for being forward-thinking 'game changers'. Research information was provided to the Cultural Landscapes and Legacy Committee to be part of the publication on the CSLA website.



## Maintenance

In 2024, our maintenance program remained vital to the sustainability of the Authority as well as the trails and amenities we have created, growing to over 90 kilometres of walkways and 35 public spaces maintained for many of our members. Our skilled and dedicated crews cover designated sites weekly with maintenance tasks ranging from routine garbage collection and landscape maintenance to periodic repairs to walks and amenities. In addition to regular maintenance, crews install a variety of plants and flowers in the spring and fall for some of our members.



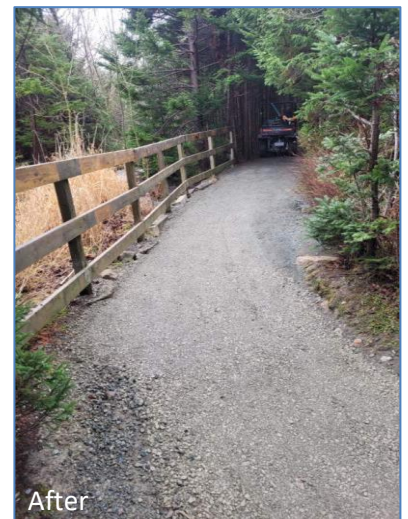
*Harbourside Park, St. John's*



*War Memorial, Torbay*



*Maintenance Worker*



### Storm Renewal and Vandalism Repairs

Each year, Grand Concourse maintenance crews tend to damage from major storms, vandalism and misuse of trails and amenities. While the severity of these events varies from year to year, the frequency seems to be on the rise, requiring more attention.



Following a weather event, crews quickly respond to assess damages and public safety risks, respond with appropriate safety precautions (such as barricades and/or signage), and systematically prioritize and perform repairs to affected areas. GCA tracks damages to help prepare and forecast for future occurrences. We also encourage trail users and members to submit feedback to help improve response time.



*Graffiti Removal.*



*Graffiti Removal*

## Winter Trail Grooming

Winter grooming continues to be a significant part of the GCA's maintenance program, extending the use of some trails beyond spring, summer, and fall. Our communities can greatly benefit from the year-round access for walking, skiing, and snowshoeing.

In 2024, our crews once again serviced the cross-country ski trails in Pippy Park and the T'Railway through Conception Bay South as a total of over 315 centimeters of snow fell on the region throughout the year. Service has expanded for the 2024-2025 winter season to include the Voisey's Brook Park Trails in the town of Portugal Cove St. Philips.



*Cross-country skiing on groomed trails.  
(Photo: Jon Duke)*



*Grooming equipment at work.*



*Grooming the CBS T'Railway*

## Financial Summary Comparison (2 Years)

### Summary of Revenue for 2023 (Unaudited)

Description	Amount
1. Member and Other, Planning, Design, and Construction Projects	\$1,863,853.00
2. Maintenance Management / Upgrading Fees	\$798,482.00
3. Member Fees	\$78,097.00
4. Bank Interest Earned	\$42,333.00
<b>Total Revenue 2023</b>	<b>\$2,782,765.00</b>

### Summary of Revenue for 2024 (Unaudited)

Description	Amount
1. Member and Other, Planning, Design, and Construction Projects	\$1,898,573.00
2. Maintenance Management / Upgrading Fees	\$832,583.00
3. Member Fees	\$78,097.00
4. Bank Interest Earned	\$64,782.00
5. Donations	\$389.00
<b>Total Revenue 2024</b>	<b>\$2,874,424.00</b>



## 2025 Proposed Projects and Funding

The following list outlines the projects both outstanding from 2024 and proposed for 2025 with funding secured or pending.

	Funding Approved	Pending
<u>Town of Paradise</u>		
Trenton Drive Accessible Trail	✓	
Silver Birch Crescent Trail		X
Corcoran's Road		X
Morgan to Howard Trail		X
<u>Manuels River Community Inc.</u>		
Reimagining Canyon East Trail	✓	
<u>Town of Conception Bay South</u>		
CBS Community Signs	✓	
<u>Town of Torbay</u>		
Eagles Nest	✓	
Upper Three Corner Pond Park Soccer Field Upgrades		X
Upper Three Corner Pond Park Solar Lighting		X
Bypass Rd. to Lower Rd.		X
GCA Benches	✓	
<u>City of St. John's</u>		
Concrete Bench Pads	✓	X
Bannerman Park Memory Stones	✓	X
Bannerman Park Statue	✓	
Boardwalk and Bridge Board Replacement	✓	
Caribou Complex Upgrades		X
St. Pat's – Armour Stone/Sod	✓	
Bench Frames and Slats	✓	X
<u>City of Mount Pearl</u>		
Urban Forestry Plan	✓	
Solar Lighting	✓	
<u>Town of Logy Bay-Middle Cove-Outer Cove</u>		
War Memorial Storyboard	✓	
Wexford Heights		X
<u>Town of Portugal Cove-St. Philip's</u>		
Broadcove River Trail	✓	
Voisey's Brook Park Sodding		X
Splash Pad Signage	✓	
Ocean's Edge Landscaping		X



<u>Other Projects</u>	Funding Approved	Pending
GCA Benches / Picnic Tables – Manufacturing and installation		X
GCA Gates		X
In Memoriam Benches – Manufacturing and installation		X
Harbour Grace Memorial Stones – Design and installation		X

<u>Maintenance</u>	Funding Secured	Pending
City of St. John’s – Walkway maintenance	✓	
City of St. John’s – Storm renewal/Vandalism	✓	
C.A. Pippy Park – Walkway maintenance	✓	
C.A. Pippy Park – Storm renewal/Vandalism	✓	
City of St. John’s – C.A. Pippy Park winter ski grooming	✓	
Janeway Play Garden – Garden maintenance	✓	
Janeway Play Garden – Storm renewal/Vandalism	✓	
Memorial University – Walkway maintenance	✓	
Memorial University – Storm renewal/Vandalism	✓	
St. John’s Port Authority – Landscape maintenance	✓	
Town of Conception Bay South – T’Railway maintenance	✓	
Town of Conception Bay South – Winter walkway grooming	✓	
Town of Conception Bay South – Storm renewal/Vandalism	✓	
Town of Torbay – Walkway maintenance	✓	
Town of Torbay – Beautification	✓	
Town of Portugal Cove/St. Philip’s – Winter walkway grooming		
Town of Portugal Cove/St. Philip’s - Beautification	✓	
Manuels River Community Inc. – Walkway maintenance	✓	
Autism Society – Landscape maintenance	✓	

With many confirmed and potential projects on the horizon in 2025, we look forward to continued success and prosperity and we pledge to continue to deliver quality and sustainability as we expand our network to enhance our communities and neighbourhoods.

With the continued guidance and support of our members, the Grand Concourse Authority remains strong and vital for the future.

## Management and Staff

A very special thank you goes out to our management and staff for their dedication and hard work.

Jamie Billard – Executive Director

Nikki Parrell – Finance Manager

Kathy Blundon – Administrative Assistant

Chris LeMessurier – Design and Planning Manager

Bob Budgell – Construction Manager

Matthew Walsh – Maintenance Manager/Safety Control Officer

Chris Hunt – Construction Supervisor

### Maintenance Staff

Dave Coady

Scott Holwell

Adam Walsh

Fred Walsh

Cory Cull

Liam LeMessurier

Jack Buckingham

Renee Batten

Harold French

### Construction Staff

Mike Hagggett – Carpenter

Paul Lockyer – Carpenter

Brandon Billard

Mark Comerford

Fred Day

Ian Fleming

James McLean

Jared Peddle

Adam Reid

Alexander Singleton

Christopher Upshall

